

Jinan Meide - Fig 300 Malleable Iron End Caps

General Specifications

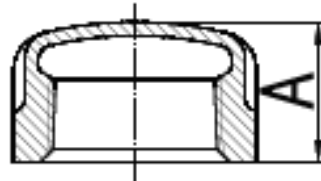
Available Black (Self-Colour) & HDG Galvanised
Cast Malleable Iron Fittings (Dimensions to BS EN 10242)
BSPT Taper/Taper Threaded (ISO 7-1)

BSI Kitemarked

Maximum Pressure: 25 bar

Temperature Range: -20°C - 300°C

ISO 9001 Accredited Manufacturer



Nominal bore		Length dim. A	Weight each
Metric	Imperial	mm	kgs
6	1/8	13	0.01
8	1/4	15	0.02
10	3/8	17	0.04
15	1/2	19	0.06
20	3/4	22	0.09
25	1	24	0.10
32	1 1/4	27	0.16
40	1 1/2	27	0.21
50	2	24	0.33
65	2 1/2	35	0.5
80	3	38	0.71
100	4	45	1.34