

# Brass Compression Fit - Straight Couplings

## Compression Fitting Specification

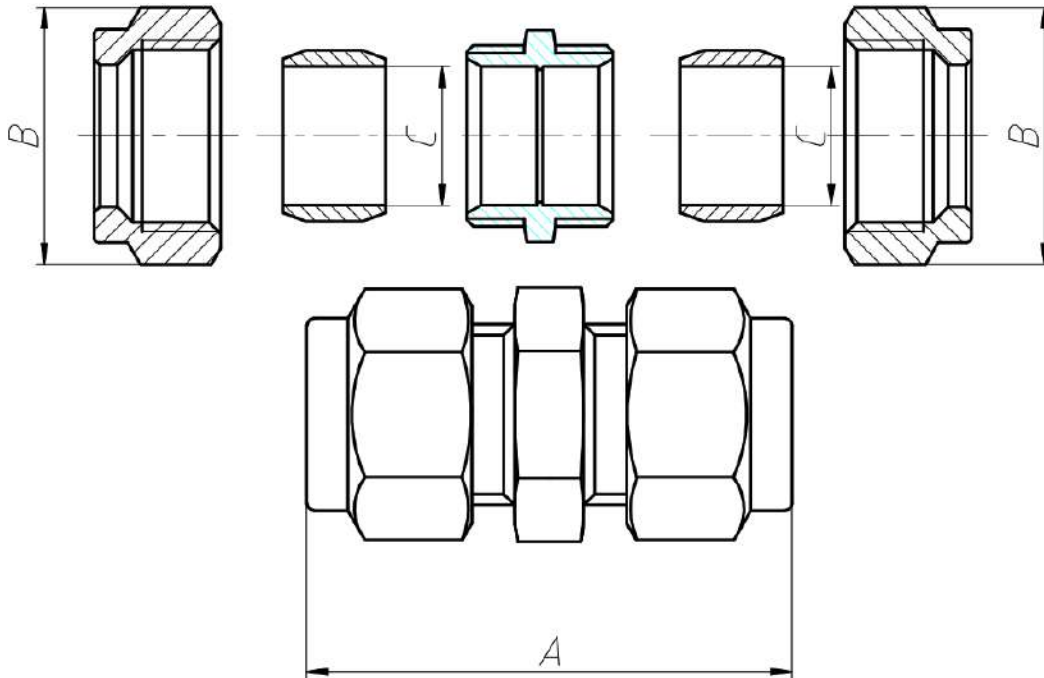


- Suitable for hot and cold drinking water, heating and chilled water systems.
- Designed for confined spaces and/or where the use of heat must be avoided.
- Connects a wide range of tubes in accordance with EN 1057.
- Available in duplex brass and/or dezincification resistant (DZR) brass or as dezincification immune red brass.
- Also available in chrome plated in accordance with EN 248.
- Compatible with low carbon steel, stainless steel, polyethylene (PE-X) and polybutylene (PB).
- Fast and easy to use flame-free installation.

### Applications & Technical Information

|                                      |   |
|--------------------------------------|---|
| Drinking water                       | Y   |
| Sanitary water                       | Y   |
| Heating and chilled water systems    | Y   |
| Compressed air                       | Y   |
| LPG and natural gas                  | Y   |
| Available sizes: water               | 8 - 54 mm                                     |
| Available sizes: gas                 | 8 - 28 mm (recommendation)                    |
| Available sizes: compressed air      | 8 - 28 mm                                     |
| Warranty                             | Backed by full manufacturers product warranty |
| Operating parameters: water          | 8 - 15 mm: 25 bar at 95°C                     |
|                                      | 28 mm: 16 bar at 95°C                         |
|                                      | 35 - 54 mm: 13 bar at 95°C                    |
| Operating parameters: gas            | 1 bar at 30°C                                 |
| Operating parameters: compressed air | 7 bar at 30°C                                 |
| Material                             | Brass, DZR                                    |

## Dimensions



### Dimensions (mm)

|                             |             |             |           |
|-----------------------------|-------------|-------------|-----------|
| <i>MF 8mm Comp Coupler</i>  | <i>33</i>   | <i>17.5</i> | <i>8</i>  |
| <i>MF 10mm Comp Coupler</i> | <i>36</i>   | <i>20</i>   | <i>10</i> |
| <i>MF 15mm Comp Coupler</i> | <i>34.5</i> | <i>26</i>   | <i>15</i> |
| <i>MF 22mm Comp Coupler</i> | <i>40.5</i> | <i>35</i>   | <i>22</i> |
| <i>MF 28mm Comp Coupler</i> | <i>45.5</i> | <i>41</i>   | <i>28</i> |
| <i>MF 35mm Comp Coupler</i> | <i>61.5</i> | <i>52</i>   | <i>35</i> |
| <i>MF 42mm Comp Coupler</i> | <i>67.5</i> | <i>62</i>   | <i>42</i> |
| <i>MF 54mm Comp Coupler</i> | <i>76.5</i> | <i>78</i>   | <i>54</i> |
| <i>Description</i>          | <i>A</i>    | <i>B</i>    | <i>C</i>  |