

# Brass Compression Fit - Reducing Tees

## Compression Fitting Specification

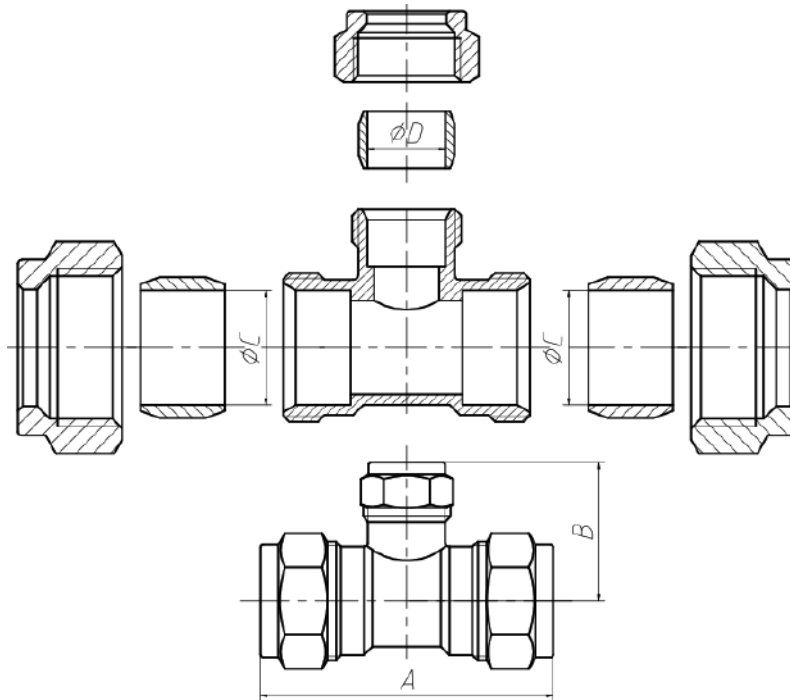


- Suitable for hot and cold drinking water, heating and chilled water systems.
- Designed for confined spaces and/or where the use of heat must be avoided.
- Connects a wide range of tubes in accordance with EN 1057.
- Available in duplex brass and/or dezincification resistant (DZR) brass or as dezincification immune red brass.
- Also available in chrome plated in accordance with EN 248.
- Compatible with low carbon steel, stainless steel, polyethylene (PE-X) and polybutylene (PB).
- Fast and easy to use flame-free installation.

### Applications & Technical Information

Drinking water	Y
Sanitary water	Y
Heating and chilled water systems	Y
Compressed air	Y
LPG and natural gas	Y
Available sizes: water	8 - 54 mm
Available sizes: gas	8 - 28 mm (recommendation)
Available sizes: compressed air	8 - 28 mm
Warranty	Backed by full manufacturers product warranty
Operating parameters: water	8 - 15 mm: 25 bar at 95°C
	28 mm: 16 bar at 95°C
	35 - 54 mm: 13 bar at 95°C
Operating parameters: gas	1 bar at 30°C
Operating parameters: compressed air	7 bar at 30°C
Material	Brass, DZR

## Dimensions



<i>MF COMP REDUCED TEE 15 x 15 x 10mm</i>	57.5	29.5	15	10	<i>Brass</i>
<i>MF COMP REDUCED TEE 15 x 15 x 22mm</i>	63	33.5	15	22	<i>Brass</i>
<i>MF COMP REDUCED TEE 22 x 22 x 15mm</i>	64.5	33.5	22	15	<i>Brass</i>
<i>MF COMP REDUCED TEE 22 x 22 x 28mm</i>	77.5	39.5	22	28	<i>Brass</i>
<i>MF COMP REDUCED TEE 28 x 28 x 15mm</i>	63.5	38	28	15	<i>Brass</i>
<i>MF COMP REDUCED TEE 28 x 28 x 22mm</i>	70.5	37.5	28	22	<i>Brass</i>
<i>Description</i>	<i>A</i>	<i>B</i>	<i>C</i>	<i>D</i>	<i>Colour</i>