



NF6 Brass Automatic Non-Free Drain Valve

Features

Automatic drain valve for prevention of freeze-up of steam traps. Reliably drains residual condensate from traps provided with drain plugs.

1. NF6 opens to drain residual condensate shortly after the shut-off of steam-using equipment when steam pressure in the trap decreases to about 0.2 barg.
2. NF6 closes steam-tight immediately after start-up of the steam-using equipment when steam pressure in the trap rises to about 0.3 barg.
3. The normal operation of the steam trap is unaffected by the NF6.
4. Built-in screen protects valve from clogging.
5. All internal parts are made of stainless steel and brass.



Specifications

Model	NF6	
Connection	Screwed	
Size	1/4"	
Maximum Operating Pressure (barg)	PMO	20
Maximum Operating Temperature (°C)	TMO	220
Valve Opening Pressure (barg)	approx. 0.2	
Valve Closing Pressure (barg)	approx. 0.3	

PRESSURE SHELL DESIGN CONDITIONS (**NOT** OPERATING CONDITIONS): Maximum Allowable Pressure (barg) PMA: 20
Maximum Allowable Temperature (°C) TMA: 220

1 bar = 0.1 MPa



1. Freezing occurs from the outlet side. When installing outlet piping, do not use thin-walled tubing. Use a short, thick-walled pipe discharging to atmosphere.

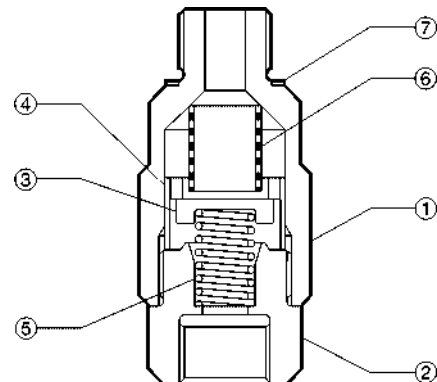
2. When used in extreme cold, due to the possibility of freezing while discharging, prevention of freezing cannot be guaranteed.



To avoid abnormal operation, accidents or serious injury, DO NOT use this product outside of the specification range. Local regulations may restrict the use of this product to below the conditions quoted.

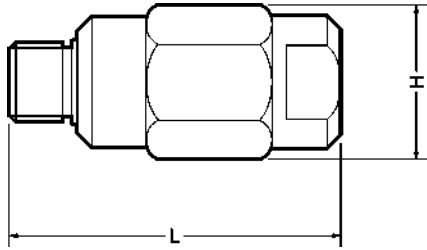
No.	Description	Material	DIN*	ASTM/AISI*
①	Body	Brass C3604	2.0401	B16 C36000
②	Valve Seat	Stainless Steel SUS303	1.4305	AISI303
③	Valve Disc	Stainless Steel SUS303	1.4305	AISI303
④	Valve Disc Guide	Brass C3601	2.0375	B16 C36000
⑤	Coil Spring	Stainless Steel SUS304	1.4301	AISI304
⑥	Screen	Stainless Steel SUS304	1.4301	AISI304
⑦	Gasket	Copper C1100P	—	B152

* Equivalent materials



Dimensions

● NF6 Screwed



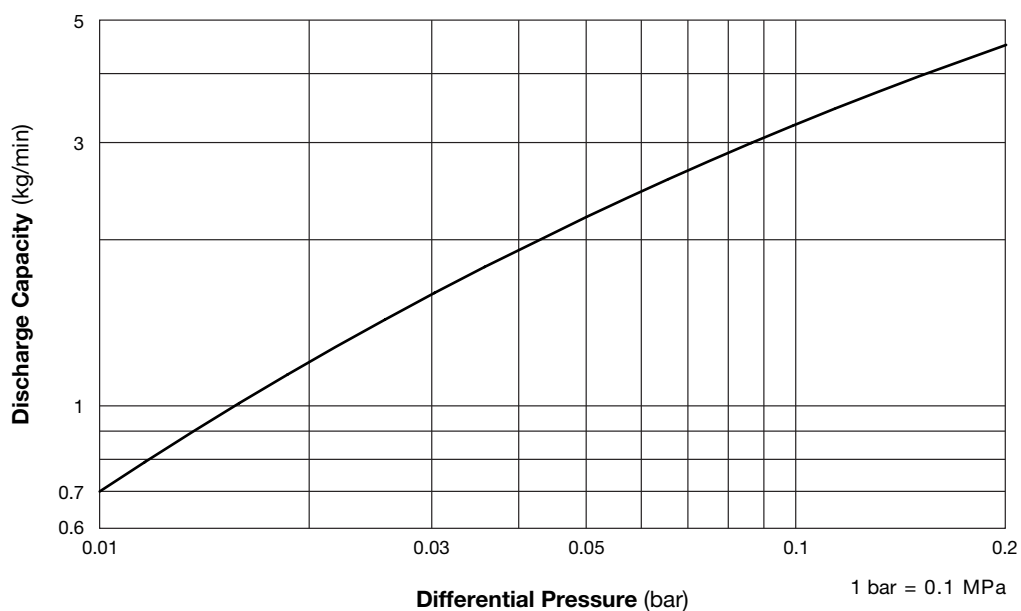
NF6 Screwed*

(mm)

Size	L	H	Weight (kg)
1/4"	51	24	0.1

* Inlet: G(PF)1/4 male, outlet: G(PF)1/4 female, other standards available

Discharge Capacity



1. Differential pressure is the difference between inlet and outlet pressure of the valve.
2. The chart is applicable to condensate below 100°C.



The amount of condensate discharged after the valve opening will vary according to the conditions affecting the condensate entering it.