

Art5952 02 Pneumatic Positioner for Linear Pneumatic Actuators

Features

1. *The pneumatic positioner is used for the control of valves with pneumatic linear actuator by means of a control signal of 3 – 15 PSI (0.2 – 1 bar).*
2. *Can be used in double action or spring return pneumatic actuator.*
3. *Easy to adjust zero and span.*
4. *Easy to convert reverse action (RA) to direct action (DA).*
5. *Fast and accurate response.*
6. *Low air consumption.*
7. *Easy to install air tubing connection.*
8. *Mounting bracket and shaft for 5065 and 5065A Genebre valve (included).*
9. *Pressure gauge at the Air Outlet (included).*

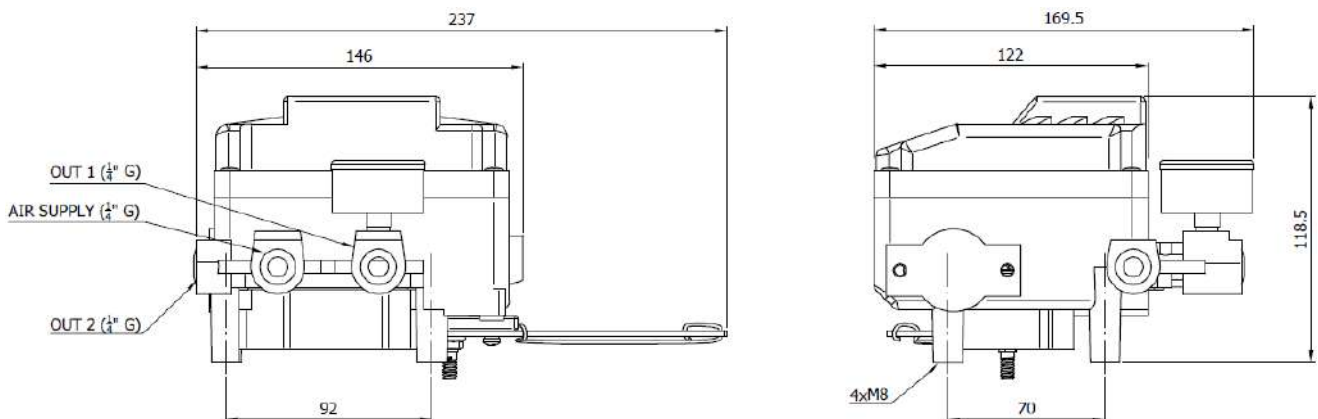
Available spare Pilot valve P5951



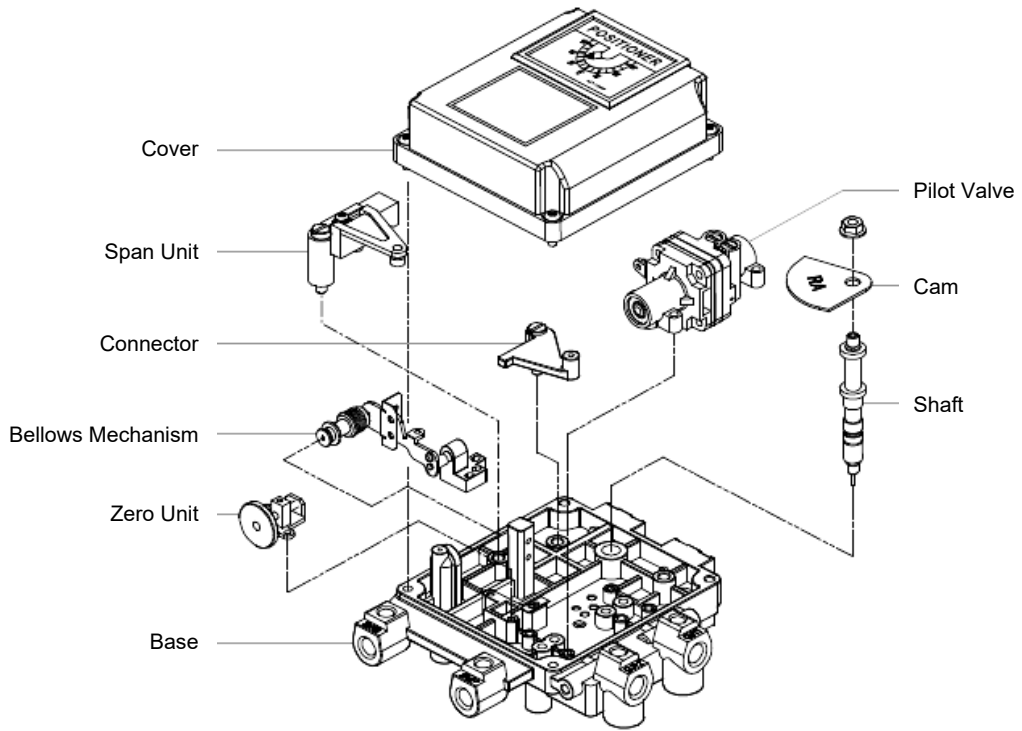
GENEBRE

Description	Values
Input Signal	3 - 15 psi (0,2 - 1 bar)
Supply Pressure	1.4 - 7 bar (20 - 100psi)
Stroke	Linear 10 – 150mm
Air Connection	G 1/4"
Gauge Connection	G 1/8"
Protection	IP66
Ambient Temperature	-20°C - 70°C
Linearity	± 1.5 % F.S. (End of Scale)
Hysteresis	± 1.5 % F.S. (End of Scale)
Sensitivity	± 0.4 % F.S. (End of Scale)
Air Consumption	3 LPM (Sup = 1.4 bar, 20psi)
Flow Capacity	80 LPM (Sup =1.4 bar, 20psi)
Material	Aluminum Alloy
Weight	2.7 Kg

Dimensions



Basic Structure



Mounting Bracket

