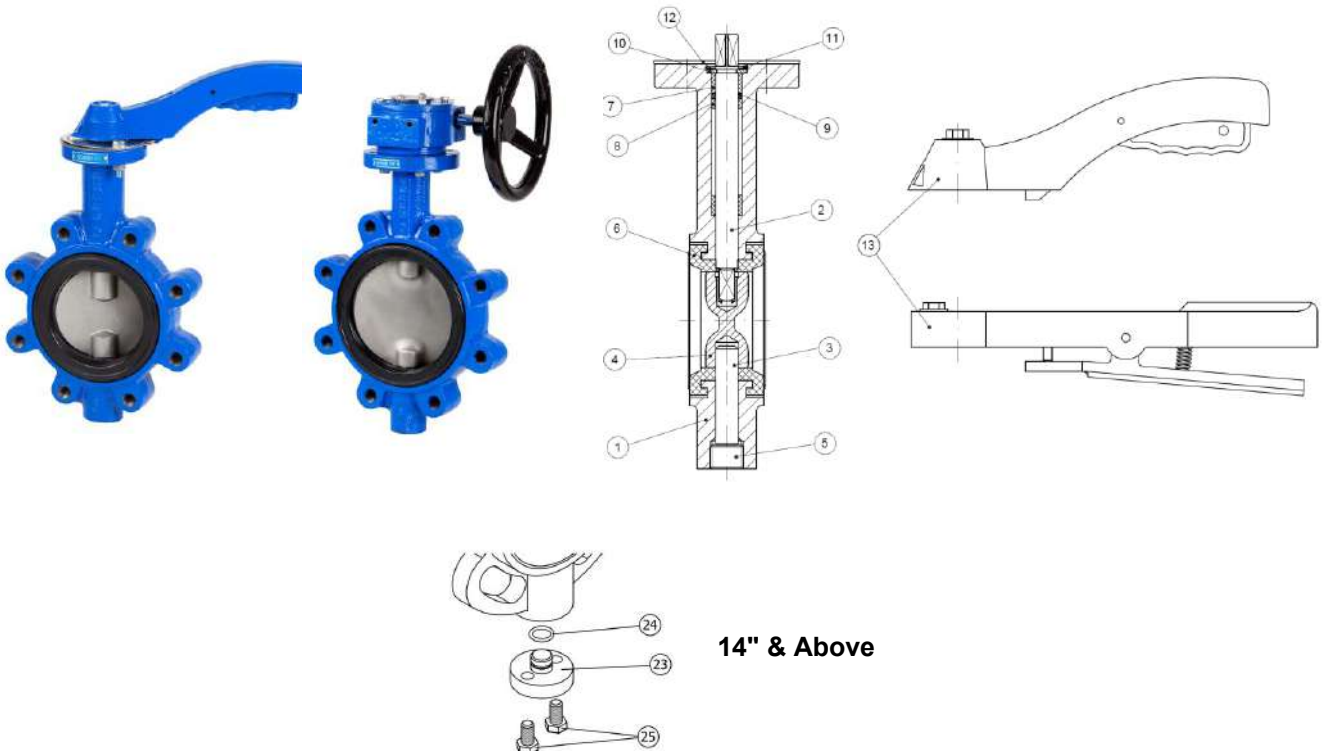


Art2108A Ductile Iron Lugged & Tapped Butterfly Valve

Features

1. Butterfly valve Lug type.
2. Ductile Iron EN-GJS-400 (GGG-40) body allows installation between ANSI 125 / 150 flanges.
3. EPDM body seat.
4. Disc made of Stainless Steel 1.4408 (CF8M).
5. Actuator mounting plate according to ISO 5211.
6. Face to face according to EN 558-1 Series 20 (DIN 3202 K1).
7. Epoxy painted.
8. Maximum working pressure:
235 psi (sizes 2" to 12")
150 psi (sizes 14" to 24")
9. Working Temperature -20°C +120 °C.



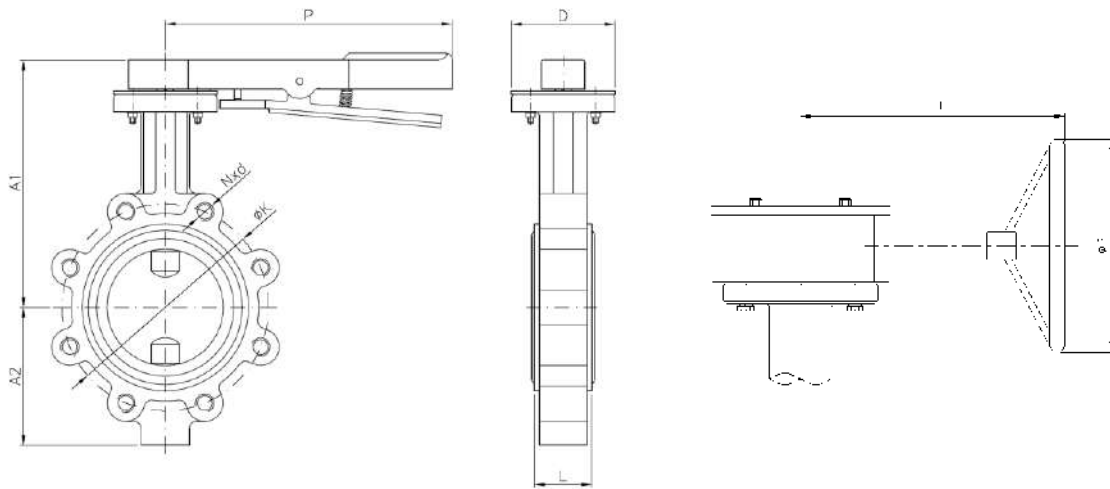
GENEBRE

N	Name	Material	Surface Treatment	Spare Part Code
1	Body	Ductile Iron EN-GJS-400	Epoxy Painted	
2	Stem	Stainless Steel AISI 416		
3	Pivot	Stainless Steel AISI 416		
4	Disc	Stainless Steel 1.4408	Shot Blasting	
5	Plug	Carbon Steel	Zinc Plated	
6*	Seat	EPDM		E2109
7	Bush	PTFE + Graphite		
8	Bush	PTFE + Graphite		
9	O-Ring	NBR		
10	Washer	Carbon Steel	Zinc Plated	
11	Stop Ring	Carbon Steel	Zinc Plated	
12	Plate	Carbon Steel	Zinc Plated	
13	Handle	Aluminium (2"-5") Cast Iron EN-GJL-200 (6"-10")	Epoxy Painted	
23	Plug	Carbon Steel (Up to 14")	Epoxy Painted	
24	O-Ring	NBR (Up to 14")		
25	Bolt	Carbon Steel (Up to 14")	Zinc Plated	

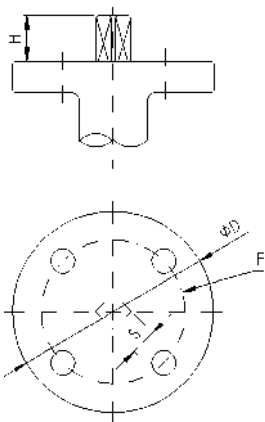
General Dimensions

Ref	Size	L	Dimensions (mm)							N x d (UNC)	Weight (Kg)
			A1	A2	D	P	J	ØK			
2108A 09	2"	43	240	79	90	216	****	121	4 x 5/8"-11	4,200	
2108A 10	2 ½"	46	240	93	90	216	****	139,7	4 x 5/8"-11	4,700	
2108A 11	3"	46	245	103	90	216	****	152,4	4 x 5/8"-11	5,000	
2108A 12	4"	52	265	120	90	216	****	190,5	8 x 5/8"-11	8,100	
2108A 13	5"	56	290	133	90	216	****	215,9	8 x 3/4"-10	9,800	
2108A 14	6"	56	240	158	125	300	****	241	8 x 3/4"-10	13,000	
2108A 16	8"	60	280	180	125	300	****	298,4	8 x 3/4"-10	17,500	
2108A 18	10"	68	325	216	125	300	****	361,9	12 x 7/8"-9	28,500	
2108A 20	12"	78	351	251	150	Ø290	240	431,8	12 x 7/8"-9	49,600	
2108A 22	14"	78	346	262	150	Ø290	257	476,3	12 x 1"-8	67,000	
2108A 24	16"	102	375	301	175	Ø290	257	539,8	16 x 1"-8	95,000	
2108A 26	18"	114	400	333	175	Ø400	306	577,9	16 x 1 1/8"-8	135,000	
2108A 28	20"	127	432	366	175	Ø400	306	635	20 x 1 1/8"-8	184,000	
2108A 32	24"	152	632	427	210	Ø400	342	749,3	20 x 1 1/4"-7	332,000	

*** Sizes 12" & Above: Gearbox Operated



Top Flange Dimensions



Ref	Size	F (ISO 5211)	S mm	D mm	H mm	Torque Nm
2108A 09	2"	F07	11	90	30	12
2108A 10	2 ½"	F07	11	90	30	20
2108A 11	3"	F07	11	90	30	27
2108A 12	4"	F07	14	90	30	40
2108A 13	5"	F07	14	90	30	60
2108A 14	6"	F07 – F10	17	125	30	90
2108A 16	8"	F07 – F10	17	125	30	120
2108A 18	10"	F10	22	125	40	180
2108A 20	12"	F10 – F12	22	150	40	240
2108A 22	14"	F12	22	150	45	610
2108A 24	16"	F14	27	175	45	805
2108A 26	18"	F14	27	175	45	1100
2108A 28	20"	F14	36	175	45	1500
2108A 32	24"	F16	Ø 50	210	70	3000

GENEBRE

Head Losses By Disc Position

Size	Disc Position (degrees)								
	90°	80°	70°	60°	50°	40°	30°	20°	10°
2"	144	114	84	61	43	27	16	7	1
2 ½"	282	223	163	107	67	43	24	11	1.5
3"	461	364	267	154	96	61	35	15	2
4"	841	701	496	274	171	109	62	27	3
5"	1376	1146	775	428	268	170	98	43	5
6"	1850	1542	1025	567	354	225	129	56	6
8"	3316	2842	1862	1081	680	421	241	102	12
10"	5430	4525	2948	1710	1076	667	382	162	19
12"	8077	6731	4393	2563	1594	1005	555	235	27
14"	10538	8874	5939	3384	2149	1320	756	299	34
16"	13966	11761	7867	4483	2847	1749	1001	397	45
18"	17214	14496	10065	5736	3643	2237	1281	507	58
20"	22339	18812	12535	7144	4536	2786	1595	632	72
24"	31850	26320	14870	9540	5320	3510	1970	915	270

Cv Values

Cv: The flow rate of water (gpm) which generates a pressure drop of 1 psi across the valve.

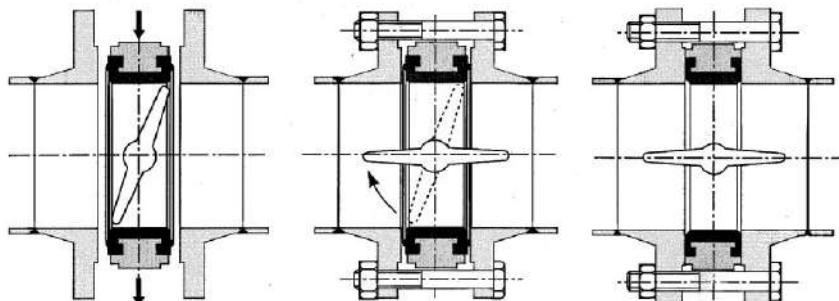
Installation Precautions

Do not install the butterfly valve in fully closed position.

Check the good parallelism of the flanges.

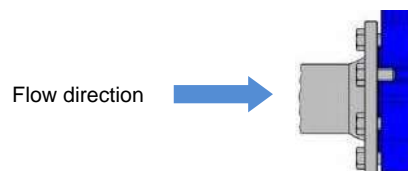
Do not insert other gaskets between flange and valve.

Open completely the valve before tightening flanges.



If the valve is installed at the end of the pipe, the maximum working pressure is:

2" - 12": 94 psi
14" - 24": 60 psi





Pressure/Temperature Rating

