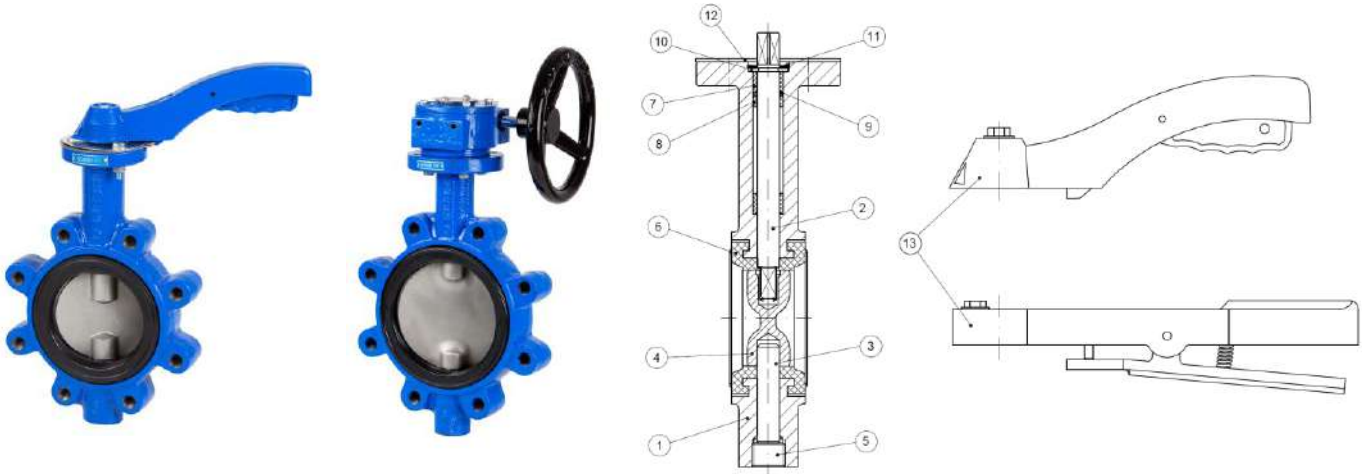


Art2108 Ductile Iron Lugged & Tapped Butterfly Valve

Features

1. Butterfly valve Lug type.
2. Ductile Iron EN-GJS-400 (GGG-40) body allows installation between EN 1092 PN 10/16 flanges.
3. EPDM body seat.
4. Disc made of Stainless Steel 1.4408 (CF8M).
5. Actuator mounting plate according to ISO 5211.
6. Face to face according to EN 558-1 Series 20 (DIN 3202 K1).
7. Epoxy painted.
8. Maximum working pressure:
16 bar (sizes DN50 to DN150)
10 bar (sizes DN200 to DN300)
9. Working Temperature -20°C +120 °C.



N	Name	Material	Surface Treatment	Spare Part Code
1	Body	Ductile Iron EN-GJS-400	Epoxy Painted	
2	Stem	Stainless Steel AISI 416		
3	Pivot	Stainless Steel AISI 416		
4	Disc	Stainless Steel 1.4408	Shot Blasting	
5	Plug	Carbon Steel	Zinc Plated	
6*	Seat	EPDM		E2109
7	Bush	PTFE + Graphite		
8	Bush	PTFE + Graphite		
9	O-Ring	NBR		
10	Washer	Carbon Steel	Zinc Plated	
11	Stop Ring	Carbon Steel	Zinc Plated	
12	Plate	Carbon Steel	Zinc Plated	
13	Handle	Aluminium (2"-5") Cast Iron EN-GJL-200 (6"-10")	Epoxy Painted	

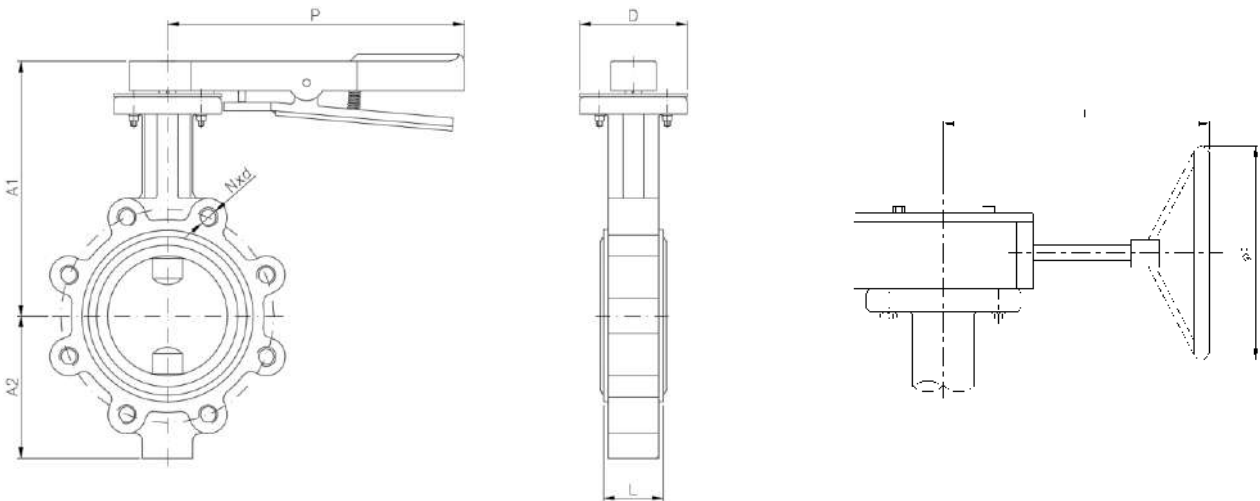
*Spare parts available.

GENEBRE

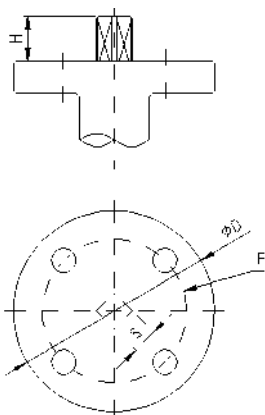
General Dimensions

Ref	DN	L	Dimensions (mm)					N x d	Weight (Kg)
			A1	A2	D	P	J		
2108 09	50	43	240	79	90	216	****	4 x M16	4,200
2108 10	65	46	240	93	90	216	****	4 x M16	4,800
2108 11	80	46	245	103	90	216	****	8 x M16	6,000
2108 12	100	52	265	120	90	216	****	8 x M16	8,100
2108 13	125	56	290	133	90	216	****	8 x M16	9,800
2108 14	150	56	240	158	125	300	****	8 x M20	13,000
2108 16	200	60	280	180	125	300	****	8 x M20	17,500
2108 18	250	68	325	216	125	300	****	12 x M20	28,500
2108 20	300	78	351	251	150	290	240	12 x M20	49,600

*** Sizes 12" & Above: Gearbox Operated



Top Flange Dimensions



Ref	DN	F (ISO 5211)	S mm	D mm	H mm	Torque N·m
2108 09	50	F07	11	90	16	12
2108 10	65	F07	11	90	16	20
2108 11	80	F07	11	90	16	27
2108 12	100	F07	14	90	16	40
2108 13	125	F07	14	90	16	60
2108 14	150	F07 – F10	17	125	30	90
2108 16	200	F07 – F10	17	125	30	120
2108 18	250	F10	22	125	40	180
2108 20	300	F10 – F12	22	150	40	240

GENEBRE

Head Losses By Disc Position

DN	Disc Position (degrees)								
	90°	80°	70°	60°	50°	40°	30°	20°	10°
50	125	99	73	53	37	23	14	6	0,9
65	244	193	141	93	58	37	21	10	1,3
80	399	315	231	133	83	53	30	13	1,7
100	727	606	429	237	148	94	54	23	2,6
125	1190	991	670	370	232	147	85	37	4
150	1600	1334	887	490	306	195	112	48	5
200	2868	2458	1611	935	588	364	208	88	10
250	4697	3914	2550	1479	931	577	330	140	16
300	6987	5822	3800	2217	1379	869	480	203	23

Kv Values

Kv: Flow rate of water in cubic meter per hour (m³/h) that will generate a pressure drop of 1 bar across the valve.

Cv Values

Cv: Flow rate of water (gpm) which generates a pressure drop of 1 psi across the valve.

Cv: 1,156 · Kv

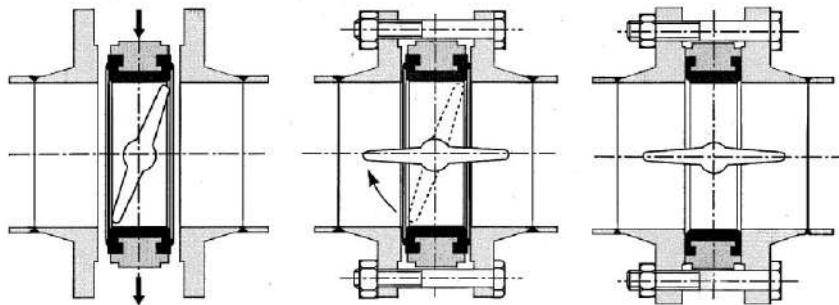
Installation Precautions

Do not install the butterfly valve in fully closed position.

Check the good parallelism of the flanges.

Do not insert other gaskets between flange and valve.

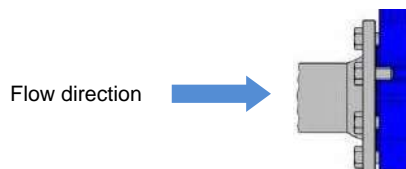
Open completely the valve before tightening flanges.



If the valve is installed at the end of the pipe, the maximum working pressure is:

2" - 6": 6.4 bar

8" - 12": 4 bar





Pressure/Temperature Rating

