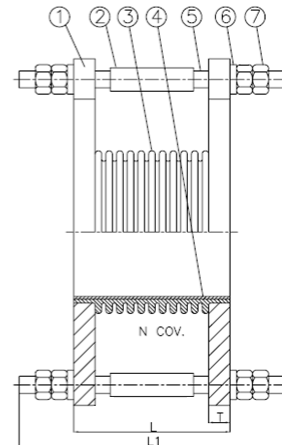
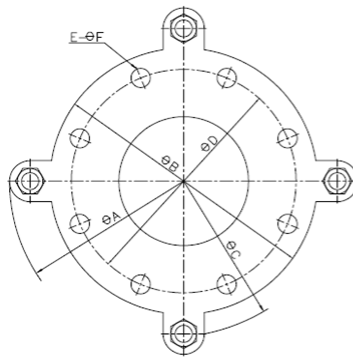


Art2835AE Metal Expansion Joint (ASME B16.5 Flanged)

Features

1. Metal Expansion Joint.
2. Flanged ends according to ANSI B16.5 Class 150.
3. Body made of Stainless Steel 1.4301 (AISI 304).
4. Carbon steel flanges with anti-caloric paint.
5. Reduced vibration.
6. Limit rods are used to protect from movements in excess.
7. Inner Sleeve to avoid excessive head loss and product accumulation inside the bellows which could reduce the work capacity of the expansion joint.
8. Unidirectional design (see arrow of flow direction).
9. Max. Working pressure 19 bar.
10. Working temperature -40 °C / +300 °C.



Nº	Name	Material	Surface Treatment
1	Flange	Carbon Steel	Painted
2	Pipe	Carbon Steel	Painted
3	Bellows	Stainless Steel 1.4301	
4	Inner Sleeve	Stainless Steel 1.4301	
5	Rod	Carbon Steel	Painted
6	Washer	Rubber	
7	Nut	Carbon Steel	Painted

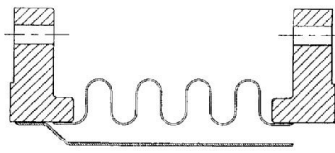
General Dimensions

Ref	Size	DN	N° Conv	Dimensions (mm)				Weight (Kg)
				A	B	C	D	
2835AE 09	2"	50	11	222	152.4	180	121	7,700
2835AE 10	2 ½"	65	11	245	177.8	207	139.7	10,150
2835AE 11	3"	80	12	265	190.5	220	152.4	12,500
2835AE 12	4"	100	12	320	228.6	260	190	16,800
2835AE 13	5"	125	11	360	254	287	215.9	22,500
2835AE 14	6"	150	12	380	279	316	241	27,800
2835AE 16	8"	200	12	446	342.9	380	298.4	39,500

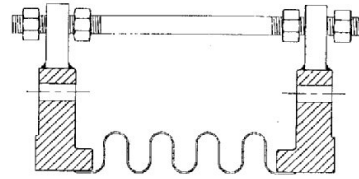
Ref	Size	DN	Dimensions (mm)				
			E - Ø F	Rods	L	L1	T
2835AE 09	2"	50	4 - 19	3 x M12	170	245	19,1
2835AE 10	2 ½"	65	4 - 19	3 x M12	170	245	22.2
2835AE 11	3"	80	4 - 19	3 x M12	170	245	23.8
2835AE 12	4"	100	8 - 19	3 x M12	170	245	23.8
2835AE 13	5"	125	8 - 22.2	4 x M16	170	265	23.8
2835AE 14	6"	150	8 - 22.2	4 x M16	220	315	25.4
2835AE 16	8"	200	8 - 22.2	4 x M16	220	315	28.6

Performance parameters

Referencia / Reference	DN	Presión de Trabajo / Working Pressure (bar)	Temperatura de trabajo / Working Temperature (°C)	Compensación Axial en diferentes ciclos de trabajo (mm) / Axial compensation in different cycle (mm)			Indice de Elasticidad Axial / Axial Spring Rate (Kgf/mm)	Area Efectiva / Effective Area (cm ²)
				1000 Ciclos / Cycle	>=5000 Ciclos / Cycle	>= 10000 Ciclos / Cycle		
2835AE 09	50	19	300	± 15	± 9	± 7	28	27,3
2835AE 10	65			± 17	± 9	± 7	33	47,3
2835AE 11	80			± 17	± 9	± 7	34	58
2835AE 12	100			± 16	± 9	± 6	45	98,5
2835AE 13	125			± 14	± 8	± 6	63	160,6
2835AE 14	150			± 18	± 10	± 8	76	228,3
2835AE 16	200			± 26	± 15	± 12	56	366,4

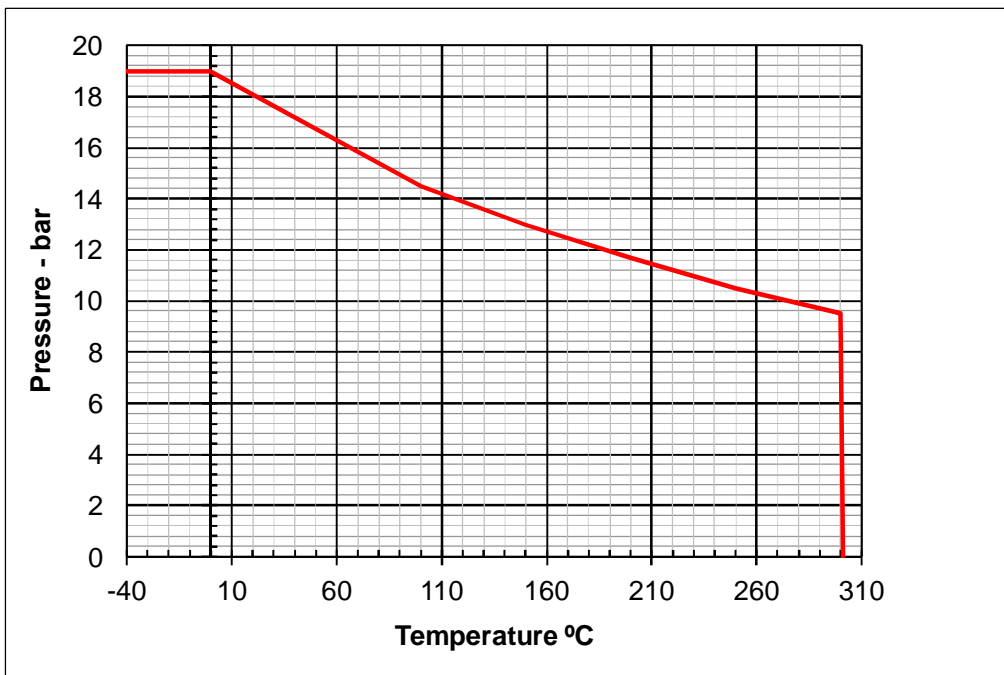


Inner Sleeve



Limit Rod (2" & Above)

Pressure/Temperature Rating



Kv Values

Kv (m³/h): Water flow rate cubic meter per hour generating a 1 bar pressure drop across the expansion joint.

2"	2 ½"	3"	4"	5"	6"	8"
170	385	512	1418	2210	3557	6012