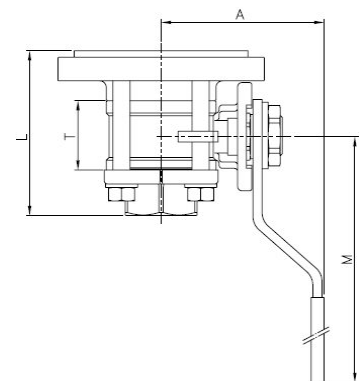
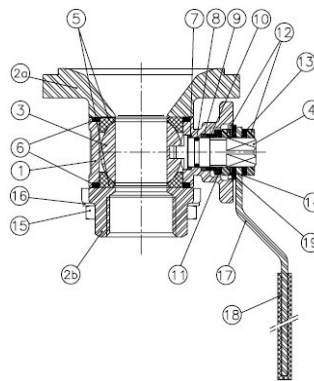


Art2052 Tank Bottom Stainless Steel Ball Valve

Features

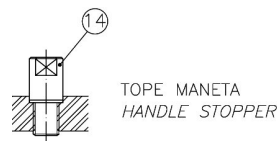
1. Stainless steel full port ball valve, 3 pieces.
2. Ends: Tank bottom / Thread end according to ISO 7-1 (EN 10226-1).
3. Made of stainless steel 1.4408(CF8M) and 316 L.
4. Ball seats PTFE + 15 % G.F.
5. FKM o'ring stem.
6. Stem gasket PTFE + 15 % Graphite.
7. Locking system.
8. Direct mounting actuator ISO 5211.
9. Blow-out proof stem.
10. Max. Working pressure 63 bar.
11. Working Temperature $-25\text{ }^{\circ}\text{C} + 180\text{ }^{\circ}\text{C}$.



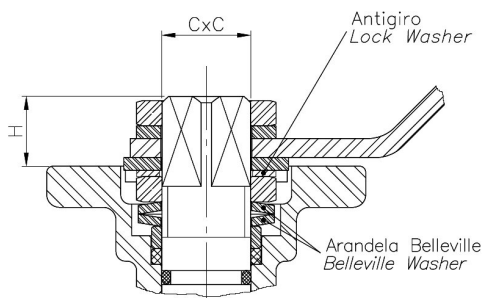
N°	Name	Material	Surface Treatment	Spare Part Code
1	Body	Stainless Steel 1.4408	Shot Blasting	
2a	Tank Bottom Flange	Stainless Steel 316		
2a	Cap	Stainless Steel 1.4408	Shot Blasting	
3*	Ball	Stainless Steel 1.4408		2907/2904 (4")
4*	Stem	Stainless Steel 316		2905
5*	Ball Seat	PTFE + 15% Graphite		2820
6*	Gasket	PTFE + Graphite		2820
7*	Thrust Washer	PTFE + Graphite		2820
8*	O-Ring	FKM		2820
9*	Stem Packing	PTFE		2820
10	Gland	Stainless Steel 304		
11	Belleville Washer	Stainless Steel 301		

12	Nut	Stainless Steel 304		
13	Washer	Stainless Steel 304		
14	Stopper	Stainless Steel 304		
15	Bolt	Stainless Steel 304		
16	Nut	Stainless Steel 304		
17	Grover Washer	Stainless Steel 304		
18	Handle	Stainless Steel 304		
19	Handle Sleeve	Vinyl		
20	Lock Washer	Stainless Steel 304		

*Repair Kit Parts



Stem Detail



Lock Washer

Prevents unthreading of stem nut in high cycle automation applications.

Belleville Washers

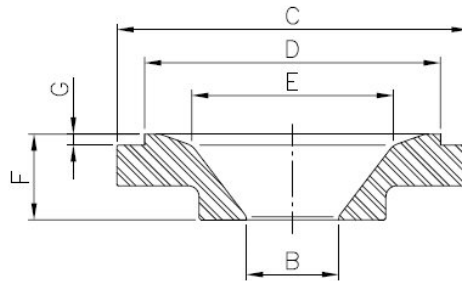
Belleville washers provide constant "live load" on the stem seals, assuring a tight seal even varying service parameters.

General Dimensions

Ref	Size	PN	Bore	A	Dimensions (mm)		
					L	M	T
2052 04	1/2"	63	15	60	65.5	112	24
2052 05	3/4"	63	20	70	76.2	138	30
2052 06	1"	63	25	70	83.3	138	33.5
2052 07	1 1/4"	63	32	88	91.3	160	41.5
2052 08	1 1/2"	63	40	94	103.3	205	51.5
2052 09	2"	63	50	100	116.5	205	63
2052 10	2 1/2"	63	65	150	147.3	330	83.5
2052 11	3"	63	80	165	169	330	100
2052 12	4"	63	100	175	198	340	118.5

Ref	Size	PN	Dimensions (mm)		
			H	C x C	ISO 5211
2052 04	1/2"	63	11	9 x 9	F-03/F-04
2052 05	3/4"	63	11	11 x 11	F-04/F-05
2052 06	1"	63	11	11 x 11	F-04/F-05
2052 07	1 1/4"	63	15	14 x 14	F-05/F-07
2052 08	1 1/2"	63	15	14 x 14	F-05/F-07
2052 09	2"	63	15	14 x 14	F-05/F-07
2052 10	2 1/2"	63	19	17 x 17	F-07/F-10
2052 11	3"	63	19	17 x 17	F-07/F-10
2052 12	4"	63	19	17 x 17	F-07/F-10

Tank Bottom Flange



Ref	Size	Dimensions (mm)					
		B	C	D	E	F	G
2052 04	1/2"	15	70	60	40	25	3
2052 05	3/4"	20	85	75	50	25	3
2052 06	1"	25	95	80	55	25	3
2052 07	1 1/4"	32	110	90	60	25	3
2052 08	1 1/2"	40	130	110	74	25	3
2052 09	2"	50	150	140	91	25	3
2052 10	2 1/2"	65	185	175	108	28	5
2052 11	3"	80	200	185	128	28	5
2052 12	4"	100	240	220	150	28	5

Kv Values

Kv: The rate of flow of water in cubic meter per hour that will generate a 1 bar pressure drop across the valve.

1/2"	3/4"	1"	1 1/4"	1 1/2"	2"	2 1/2"	3"	4"
24	43	83	130	205	340	520	1100	1820

Pressure/Temperature Rating

