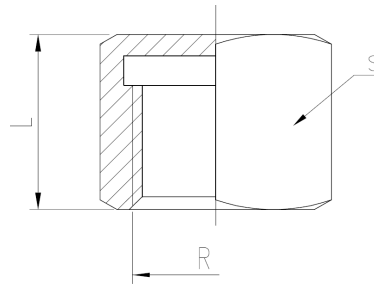


## Art0300 Stainless Steel Hexagon End Cap (BSP Threaded)

### Features

1. Made of AISI 316 (Investment Casting).
2. Thread according to ISO 7-1 (EN 10226-1) Std.
3. Dimensions according to ISO 4144 Std.
4. Max. Working pressure 20 Bar ( S-150 ).
5. Temperature ratings -20 °C to 220 °C.



### General Dimensions

Ref	Size (R)	Dimensions (mm)	
		L	S
0300 02	1/4"	14	18
0300 03	3/8"	14.5	20
0300 04	1/2"	18.5	25
0300 05	3/4"	19.5	30
0300 06	1"	22.5	38
0300 07	1 1/4"	25.5	47
0300 08	1 1/2"	25.5	53
0300 09	2"	30	66
0300 10	2 1/2"	35	82
0300 11	3"	38.5	96
0300 12	4"	45	122