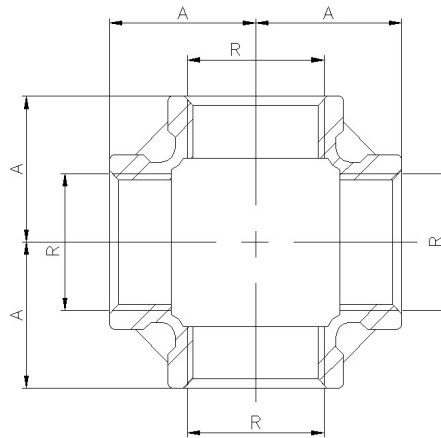


## Art0180 Stainless Steel Equal Cross (BSP Threaded)

### Features

1. Made of AISI 316 (Casting).
2. Thread according to ISO 7-1 (10226-1) Std.
3. Dimensions according to ISO 4144 Std.
4. Max. Working pressure 20 Bar ( S-150 ).
5. Temperature ratings -20 °C to 220 °C.



### General Dimensions

| Ref     | Size (R) | Dimensions (mm) - A |
|---------|----------|---------------------|
| 0180 02 | 1/4"     | 19                  |
| 0180 03 | 3/8"     | 23                  |
| 0180 04 | 1/2"     | 27                  |
| 0180 05 | 3/4"     | 32                  |
| 0180 06 | 1"       | 38                  |
| 0180 07 | 1 1/4"   | 45                  |
| 0180 08 | 1 1/2"   | 48                  |
| 0180 09 | 2"       | 57                  |