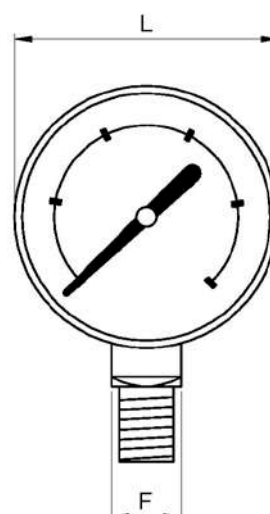
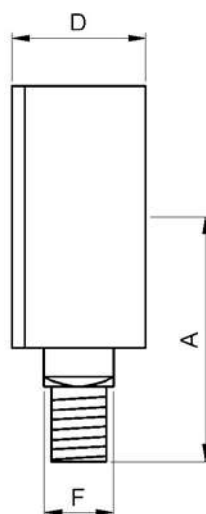


## Art3822

### 63mm Glycerine Filled Pressure Gauge (Bottom BSP Connection)

#### Features

1. Size Ø63.
2. Pressure gauge with radial bottom connection, male thread (BSP) G 1/4" according ISO 228/1.
3. Case in stainless steel AISI 304.
4. Contains glycerine.
5. Tube "Bourdon" and brass fitting connection according UNE-EN 12165.
6. White dial: black scale (bar) and red (psi).
7. Polycarbonate viewer.
8. Rubber plug for filling hole.
9. Class precision: cl. 2,5.
10. Scale available from 0 to 2,5 - 4 - 6 - 10 - 16 - 25 - 60 - 100 bar.
11. Working temperature: from -20°C to 60°C.



Ref.	Scale		Dimensions (mm)				Weight (Kg)
	bar	psi	A	L	D	F	
3822 002	0 - 2,5	0 - 40	55	63	30	14x14	0,180
3822 004	0 - 4	0 - 60	55	63	30	14x14	0,180
3822 006	0 - 6	0 - 90	55	63	30	14x14	0,180
3822 010	0 - 10	0 - 150	55	63	30	14x14	0,180
3822 016	0 - 16	0 - 240	55	63	30	14x14	0,180
3822 025	0 - 25	0 - 400	55	63	30	14x14	0,180
3822 060	0 - 60	0 - 900	55	63	30	14x14	0,180
3822 100	0 - 100	0 - 1500	55	63	30	14x14	0,180