

Viking Grooved Mechanical Tee



Approvals



Nominal size		Model	Pipe OD mm (Inch)	Grooved outlet	Hole Dia +3.20 (+0.126) mm (inch)	Approvals				Weight
DN	Inch					VdS	LPCB	FM	UL	kg (lbs)
50	2	3G	60.3 (2.37)	DN32 / 42.4	45 (1.75)	C	-	D	D	0.73 (1.6)
				DN40 / 48.3	45 (1.75)	C	-	D	D	0.77 (1.7)
65	3	3G	76.1 (3.0)	DN32 / 42.4	51 (2.00)	C	-	D	D	0.73 (1.6)
				DN40 / 48.3	51 (2.00)	C	-	D	D	0.77 (1.7)
80	3	3G	88.9 (3.5)	DN32 / 42.4	51 (2.00)	C	-	D	D	1.23 (2.72)
				DN40 / 48.3	51 (2.00)	C	-	D	D	1.26 (2.77)
				DN50 / 60.3	64 (2.50)	C	-	D	D	1.39 (3.07)
100	4	3G	114.3 (4.5)	DN32 / 42.4	51 (2.00)	C	-	D	D	(2.00)
				DN40 / 48.3	51 (2.00)	C	-	D	D	(2.00)
				DN50 / 60.3	64 (2.50)	C	-	D	D	(2.50)
		DN65 / 73		70 (2.75)	-	-	D	D	(2.75)	
		DN65 / 76.1		70 (2.75)	C	C	-	-	(2.75)	
		DN80 / 88.9		89 (3.50)	C	C	D	D	(3.50)	
125	5-1/2	3G	139.7 (5.5)	DN50 / 60.3	64 (2.50)	C	-	D	D	(2.50)
		3GS		DN65 / 76.1	70 (2.75)	C	C	-	-	(2.75)
				DN65 / 76.1	70 (2.75)	-	-	D	D	2.14 (4.72)
150	6-1/2	3G	165.1 (6.5)	DN50 / 60.3	64 (2.50)	-	-	-	D	3.04 (6.70)
		3GS		DN65 / 76.1	70 (2.75)	-	C	-	-	3.11 (6.86)
				DN65 / 76.1	70 (2.75)	-	-	D	D	2.49 (5.48)
		3G		DN80 / 88.9	89 (3.50)	-	-	C	D	3.22 (7.10)
				DN100 / 114.3	114 (4.50)	-	-	C	D	3.78 (8.33)
150	6	3GS	168.3 (6.63)	DN40 / 48.3	51 (2.00)	-	-	D	D	2.37 (5.23)
		3G		DN40 / 48.3	51 (2.00)	C	-	D	D	2.93 (6.45)
				DN50 / 60.3	64 (2.50)	C	-	D	D	3.15 (6.95)
		3GS		DN65 / 73	70 (2.75)	-	-	D	D	3.33 (7.34)
				DN65 / 76.1	70 (2.75)	C	C	-	-	3.28 (7.24)
				DN65 / 76.1	70 (2.75)	-	-	D	D	2.63 (5.81)
				DN80 / 88.9	89 (3.50)	C	C	D	D	3.44 (7.57)
		200		8	3G	219.1 (8.63)	DN50 / 60.3	64 (2.50)	C	-
DN65 / 76.1	70 (2.75)		C				C	D	D	4.78 (10.5)
DN80 / 88.9	89 (3.50)		C				C	D	D	5.32 (11.7)
DN100 / 114.3	114 (4.50)		C				C	D	D	5.51 (12.2)

OD = Outside Diameter

Working pressure: **A** = max. 12.1 bar (175 psi) / **B** = max. 15.5 bar (225 psi) / **C** = max. 16 bar (232 psi) / **D** = max. 20.7 bar (300 psi) / **E** = max. 25 bar (363 psi) / **F** = max. 34.5 bar (500 psi) / - = no approvals

Technical data

Type 3G
 Mechanical tee grooved
 Ambient temperature -34 °C to 110 °C (-30 °F to 230 °F)
Tightening torque:
 - DN50 40 - 60 Nm (30 - 45 lb-ft)
 - DN65 - DN100 110 - 135 Nm (80 - 100 lb-ft)
 - DN125, DN150 135 - 175 Nm (100 - 130 lb-ft)
 - DN200 175 - 245 Nm (130 - 180 lb-ft)

Material / surface

Mechanical tee ductile cast iron
 - Red paint liquid painting similar RAL 3000
 - Galvanized hot dip galvanized
 Gasket EPDM
 Bolts and nuts carbon steel, zinc electroplated

Application

Water based fire-suppression systems

Note

EPDM gaskets must never be brought into contact with lubricants or oils containing mineral oils, as well as other materials containing mineral oils (e.g. fuels or cleaning agents).

Installation

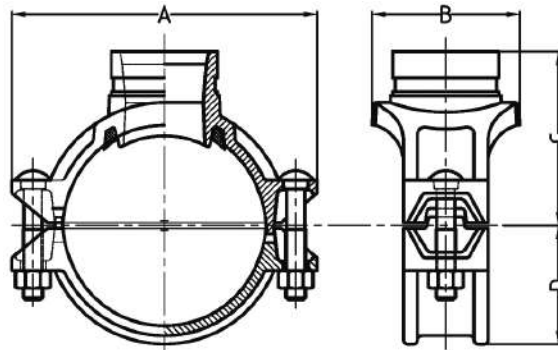
Refer to "Grooved Products Installation Guide"

Maintenance

Visual check

Dimensional drawing

Dimensions in mm (inch)



DN	Inch	Model	Grooved outlet	A	B	C	D	Bolts - Nuts	SW
50 / 60.3	2	3G	DN32 - DN40	116 (4.57)	76.0 (2.99)	69.5 (2.74)	39.0 (1.54)	M10x55	16
65 / 76.1	3 OD	3G	DN32 - DN40	137 (5.39)	84.5 (3.33)	78.0 (3.07)	49.5 (1.95)	M12x70	16
80 / 88.9	3	3G	DN32 - DN40	152 (5.98)	85.5 (3.37)	84.5 (3.33)	56.5 (2.22)	M12x70	22
			DN50	152 (5.98)	98.0 (3.86)	84.5 (3.33)	56.5 (2.22)	M12x70	22
100 / 114.3	4	3G	DN32 - DN40	188 (7.40)	89.0 (3.50)	102.0 (4.02)	70.0 (2.76)	M12x70	22
			DN50 - DN65	188 (7.40)	104.5 (4.11)	102.0 (4.02)	70.0 (2.76)	M12x70	22
		3GS	DN65	178 (7.01)	103.5 (4.07)	98.0 (3.86)	67.5 (2.66)	M12x76	22
		3G	DN80	188 (7.40)	128.0 (5.03)	102.0 (4.02)	70.0 (2.76)	M12x70	22
125 / 139.7	5-1/2 OD	3G	DN50 - DN65	221.5 (8.72)	112.5 (4.43)	118.0 (4.65)	84.0 (3.31)	M16x85	24
		3GS	DN65	210 (8.27)	110.0 (4.33)	113.0 (4.45)	82.0 (3.23)	M16x85	24
150 / 165.1	6-1/2 OD	3G	DN50	244 (9.60)	112.5 (4.43)	127.0 (5.00)	97.5 (3.84)	M16x105	24
			DN65	244 (9.60)	112.5 (4.43)	130.0 (5.12)	97.5 (3.84)	M16x105	24
		3GS	DN50	235 (9.25)	110.0 (4.33)	124.5 (4.90)	94.5 (3.72)	M16x108	24
			DN65	244 (9.60)	132.0 (5.20)	130.0 (5.12)	97.5 (3.84)	M16x105	24
150 / 168.3	6	3GS	DN40	240 (9.45)	92.5 (3.64)	126.0 (4.96)	96.5 (3.80)	M16x108	24
			DN50	247 (9.72)	95.0 (3.74)	128.0 (5.04)	98.5 (3.88)	M16x105	24
		3G	DN50	247 (9.72)	114.0 (4.49)	134.0 (5.28)	98.5 (3.88)	M16x105	24
			DN65	247 (9.72)	112.5 (4.42)	134.0 (5.28)	98.5 (3.88)	M16x105	24
		3GS	DN65	240 (9.45)	110.0 (4.33)	126.0 (4.96)	96.5 (3.80)	M16x108	24
			DN80	247 (9.72)	132.0 (5.20)	141.0 (5.55)	98.5 (3.88)	M16x105	24
		3G	DN80	247 (9.72)	160.0 (6.30)	138.0 (5.43)	98.5 (3.88)	M16x105	24
			DN100	247 (9.72)	160.0 (6.30)	138.0 (5.43)	98.5 (3.88)	M16x105	24
200 / 219.1	8	3G	DN50 - DN65	322 (12.7)	118.0 (4.65)	158.0 (6.22)	125.0 (4.92)	M20x115	30
			DN80	322 (12.7)	136.5 (5.37)	161.0 (6.34)	125.0 (4.92)	M20x115	30
			DN100	322 (12.7)	164.0 (6.46)	161.0 (6.34)	125.0 (4.92)	M20x115	30