

# Viking Grooved Concentric Reducers



## Approvals



Nominal size		Pipe OD	Approvals				Weight approx.
DN	Inch	mm (Inch)	VdS	LPCB	FM	UL	kg (lbs)
32x25	1-1/4 x 1	42.4 x 33.7 (1.66 x 1.32)	C	E	F	F	0.20 (0.44)
40x25	1-1/2 x 1	48.3 x 33.7 (1.90 x 1.32)	C	E	F	F	0.23 (0.51)
40x32	1-1/2 x 1-1/4	48.3 x 42.4 (1.90 x 1.66)	C	E	F	F	0.26 (0.57)
50x25	2 x 1	60.3 x 33.7 (2.38 x 1.32)	C	E	F	F	0.28 (0.62)
50x32	2 x 1-1/4	60.3 x 42.4 (2.38 x 1.66)	C	E	F	F	0.31 (0.68)
50x40	2 x 1-1/2	60.3 x 48.3 (2.38 x 1.90)	C	E	F	F	0.32 (0.71)
65x32	2-1/2 x 1-1/4	73.0 x 42.4 (2.88 x 1.66)	-	-	F	F	0.40 (0.88)
	3 OD x 1-1/4	76.1 x 42.4 (3.00 x 1.66)	C	E	F	F	0.47 (1.04)
65x40	2-1/2 x 1-1/2	73.0 x 48.3 (2.88 x 1.90)	-	-	F	F	0.40 (0.88)
	3 OD x 1-1/2	76.1 x 48.3 (3.00 x 1.90)	C	E	F	F	0.48 (1.06)
65x50	2-1/2 x 2	73.0 x 60.3 (2.88 x 2.38)	-	-	F	F	0.42 (0.93)
	3 OD x 2	76.1 x 60.3 (3.00 x 2.38)	C	E	F	F	0.49 (1.08)
80x32	3 x 1-1/4	88.9 x 42.4 (3.50 x 1.66)	-	-	F	E	0.52 (1.15)
80x40	3 x 1-1/2	88.9 x 48.3 (3.50 x 1.90)	C	-	F	F	0.54 (1.19)
80x50	3 x 2	88.9 x 60.3 (3.50 x 2.38)	C	E	F	F	0.56 (1.23)
80x65	3 x 2-1/2	88.9 x 73.0 (3.50 x 2.88)	-	-	F	F	0.59 (1.30)
	3 x 3 OD	88.9 x 76.1 (3.50 x 3.00)	C	E	F	F	0.72 (1.59)
100x50	4 x 2	114.3 x 60.3 (4.50 x 2.38)	C	E	F	F	0.84 (1.85)
100x65	4 x 2-1/2	114.3 x 73.0 (4.50 x 2.88)	-	-	F	F	1.08 (2.38)
	4 x 3 OD	114.3 x 76.1 (4.50 x 3.00)	C	E	F	D	0.94 (2.07)
100x80	4 x 3	114.3 x 88.9 (4.50 x 3.50)	C	E	F	F	0.93 (2.05)
125x100	5-1/2 OD x 4	139.7 x 114.3 (5.50 x 4.50)	C	E	F	D	1.38 (3.04)
	5 x 4	141.3 x 114.3 (5.56 x 4.50)	-	-	F	F	1.76 (3.88)
150x50	6-1/2 OD x 2	165.1 x 60.3 (6.50 x 2.38)	-	-	F	D	2.05 (4.52)
	6 x 2	168.3 x 60.3 (6.63 x 2.38)	C	E	F	F	2.13 (4.70)
150x65	6-1/2 OD x 3 OD	165.1 x 76.1 (6.50 x 3.00)	-	-	F	D	1.99 (4.39)
	6 x 3 OD	168.3 x 76.1 (6.63 x 3.00)	C	E	F	D	2.23 (4.92)

OD = Outside Diameter

Working pressure: **A** = max. 12.1 bar (175 psi) / **B** = max. 15.5 bar (225 psi) / **C** = max. 16 bar (232 psi) / **D** = max. 20.7 bar (300 psi) / **E** = max. 25 bar (363 psi) / **F** = max. 34.5 bar (500 psi) / - = no approvals

Nominal size		Pipe OD	Approvals				Weight approx.
DN	Inch	mm (Inch)	VdS	LPCB	FM	UL	kg (lbs)
150x80	6-1/2 ODx3	165.1x88.9 (6.50x3.50)	-	E	F	D	1.85 (4.08)
	6x3	168.3x88.9 (6.63x3.50)	C	E	F	F	2.55 (5.62)
150x100	6-1/2 ODx4	165.1x114.3 (6.50x4.50)	-	E	F	D	2.08 (4.59)
	6x4	168.3x114.3 (6.63x4.50)	C	E	F	F	2.60 (5.73)
150x125	6-1/2 ODx5-1/2 OD	165.1x139.7 (6.50x5.50)	-	E	F	D	2.12 (4.67)
	6x5-1/2 OD	168.3x139.7 (6.63x5.50)	C	E	F	D	2.19 (4.83)
	6x5	168.3x141.3 (6.63x5.56)	-	-	F	F	2.95 (6.50)
200x80	8x3	219.1x88.9 (8.63x3.50)	C	E	F	F	3.75 (8.27)
200x100	8x4	219.1x114.3 (8.63x4.50)	C	E	F	F	4.90 (10.80)
200x125	8x5-1/2 OD	219.1x139.7 (8.63x5.50)	C	E	D	D	4.97 (11.00)
200x150	8x6-1/2 OD	219.1x165.1 (8.63x6.50)	-	-	D	D	3.79 (8.36)
	8x6	219.1x168.3 (8.63x6.63)	C	E	F	F	3.75 (8.27)
250x150	10x6	273.0x168.3 (10.75x6.63)	C	-	D	D	6.45 (14.20)
250x200	10x8	273.0x219.1 (10.75x8.63)	C	-	D	D	8.28 (18.30)
300x200	12x8	323.9x219.1 (12.75x8.63)	C	-	D	D	12.20 (26.80)
300x250	12x10	323.9x273.0 (12.75x10.75)	C	-	D	D	13.80 (30.40)

OD = Outside Diameter

Working pressure: **A** = max. 12.1 bar (175 psi) / **B** = max. 15.5 bar (225 psi) / **C** = max. 16 bar (232 psi) / **D** = max. 20.7 bar (300 psi) /

**E** = max. 25 bar (363 psi) / **F** = max. 34.5 bar (500 psi) / - = no approvals

#### Technical data

Type .....240

Material .....ductile cast iron

#### Finish:

- Red paint ..... liquid painting similar RAL 3000

- Galvanized .....hot dip galvanized

#### Application

Water based fire-suppression systems

#### Installation

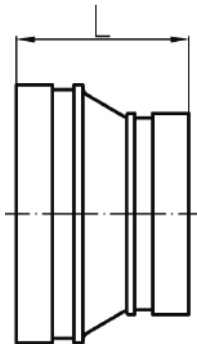
Refer to "Grooved Products Installation Guide"

#### Maintenance

Visual check

#### Dimensional drawing

Dimensions in mm (inch)



DN	Inch	L (mm / inch)
32x25	1-1/4x1	64 (2.50)
40x...	1-1/4x...	
50x...	2x...	
65x...	2.1/2x...	
	3 ODx...	
80x...	3x...	76 (3.00)
100x...	4x...	

DN	Inch	L (mm / inch)
125x100	5-1/2 ODx4	89 (3.50)
	5x4	
150x...	6-1/2 ODx...	102 (4.00)
	6x...	
200x...	8x...	127 (5.00)
250x...	10x...	152 (6.00)
300x...	12x...	178 (7.00)