

Jinan Meide - Fig 220

Malleable Iron Full Taper Sockets (Female)

General Specifications

Available Black (Self-Colour) & HDG Galvanised
Cast Malleable Iron Fittings (Dimensions to BS EN 10242)

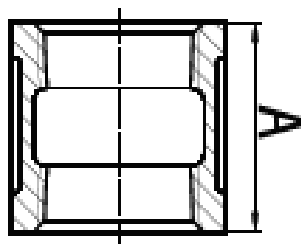
BSPT Taper/Taper Threaded (ISO 7-1)

BSI Kitemarked

Maximum Pressure: 25 bar

Temperature Range: -20°C - 300°C

ISO 9001 Accredited Manufacturer



Nominal bore		Length dim.A	Weight each
Metric	Imperial	mm	kgs
8	1/4	36	0.03
10	3/8	38	0.02
15	1/2	44	0.06
20	3/4	47	0.09
25	1	53	0.14
32	1 1/4	57	0.23
40	1 1/2	59	0.28
50	2	68	0.41
65	2 1/2	75	0.61
80	3	83	0.94
100	4	96	0.52
150	6	110	4.54